



## **Clinical Package Validator Installation Guide**

22 June 2026 v3.3

Draft for internal review

Document ID: DH-4399:2026



## Acknowledgements

### Council of Australian Governments

The Australian Digital Health Agency is jointly funded by the Australian Government and all state and territory governments.

### IHTSDO (SNOMED CT)

This material includes SNOMED Clinical Terms™ (SNOMED CT®) which is used by permission of the International Health Terminology Standards Development Organisation (IHTSDO). All rights reserved. SNOMED CT® was originally created by The College of American Pathologists. “SNOMED” and “SNOMED CT” are registered trademarks of the [IHTSDO](http://www.ihtsd.org).

### HL7 International

This document includes excerpts of HL7™ International standards and other HL7 International material. HL7 International is the publisher and holder of copyright in the excerpts. The publication, reproduction and use of such excerpts is governed by the [HL7 IP Policy](#) and the HL7 International License Agreement. HL7 and CDA are trademarks of Health Level Seven International and are registered with the United States Patent and Trademark Office.

---

## Disclaimer

The Australian Digital Health Agency (“the Agency”) makes the information and other material (“Information”) in this document available in good faith but without any representation or warranty as to its accuracy or completeness. The Agency cannot accept any responsibility for the consequences of any use of the Information. As the Information is of a general nature only, it is up to any person using or relying on the Information to ensure that it is accurate, complete and suitable for the circumstances of its use.

## Document control

This document is maintained in electronic form and is uncontrolled in printed form. It is the responsibility of the user to verify that this copy is the latest revision.

## Copyright © 2020 Australian Digital Health Agency

This document contains information which is protected by copyright. All Rights Reserved. No part of this work may be reproduced or used in any form or by any means – graphic, electronic, or mechanical, including photocopying, recording, taping, or information storage and retrieval systems – without the permission of the Australian Digital Health Agency. All copies of this document must include the copyright and other information contained on this page.

OFFICIAL

## Document information

### Key information

<b>Owner</b>	Director, Connectivity & Informatics
<b>Contact for enquiries</b>	Australian Digital Health Agency Help Centre
Phone	<a href="tel:1300901001">1300 901 001</a>
Email	<a href="mailto:help@digitalhealth.gov.au">help@digitalhealth.gov.au</a>

### Product or document version history

Product or document version	Date	Release comments
2.0	22 Aug 2014	Major release.
2.1	20 Jan 2015	Feature and usability enhancements.
2.2	–	Not published.
2.3	17 Jul 2015	Software enhancements (see release note for details).
2.4	20 May 2016	Software enhancements (see release note for details).
2.5	29 May 2017	Support for ISO Schematrons and other software enhancements (see release note for details).
2.6.1	21 Nov 2017	Software enhancements (see release note for details).
2.7	16 Feb 2018	Software enhancements (see release note for details).
2.8	20 Jan 2020	Software enhancements (see release note for details).
2.9 - 3.1	--	Not published
3.2	08 Dec 2020	Configuration guide from previous version moved to User and Configuration Guide document
3.3	22 Jun 2026	Update guide removing SQL CE Drivers no longer required and new location for data file

## Table of contents

<b>1</b>	<b>Introduction .....</b>	<b>5</b>
1.1	Purpose .....	5
1.2	Intended audience .....	5
1.3	Scope.....	5
<b>2</b>	<b>Before you begin .....</b>	<b>6</b>
2.1	Prerequisites .....	6
2.2	Uninstall an earlier version of the Validator .....	7
2.3	Install a NASH test certificate .....	9
<b>3</b>	<b>Installing the Validator and prerequisite software .....</b>	<b>15</b>
3.1	Install Microsoft SQL Server Compact Edition 3.5 Service Pack 2 for Windows Desktop .....	<b>Error! Bookmark not defined.</b>
3.2	Installing the Validator .....	15
<b>4</b>	<b>Troubleshooting .....</b>	<b>19</b>
4.1	Install the Validator in Administrator mode .....	19
4.2	Validator states “Missing SQL CE Drivers”.....	<b>Error! Bookmark not defined.</b>
	<b>Acronyms .....</b>	<b>20</b>

# 1 Introduction

## 1.1 Purpose

This document describes how to install the Clinical Package Validator (the Validator).

## 1.2 Intended audience

This document is intended for:

- Testers who use the Validator to assist them in assessing whether their healthcare software system produces clinical documents that conform to some clinical document specifications, and clinical packages that conform to some clinical package specifications;
- Developers who use the Validator to provide quick feedback during software development; and
- Administrators who need to install the Validator for other users.

The Validator does not test all conformance specifications and you must carefully read the Product Data Sheet for the Validator that indicates what is out of scope.

## 1.3 Scope

This document describes the system requirements, administrator rights, and supporting software needed for installing the Validator. It also describes how to install and configure the Validator.

## 2 Before you begin

### 2.1 Prerequisites

Before installing and configuring the Validator, you must have:

- administrator rights to your PC;
- Windows 10 or above;
- 4GB minimum memory;
- 8GB recommended memory; and
- 1GB minimum disk space free.

If the following software is not already installed on your computer, it will be automatically installed during the installation of the Validator (Section 3):

- .NET Framework 4.7.2 or a later version

The Validator allows more than one version of the software to operate on the same computer (Section 2.2) so it is no longer necessary for a user to uninstall previous versions of the Validator.

A NASH test certificate must be installed before a user can access template packages in the My Health Record software vendor test (SVT) environment (Section 2.3), though the installation does include a default set of the latest Template Packages should the user not have a NASH certificate.

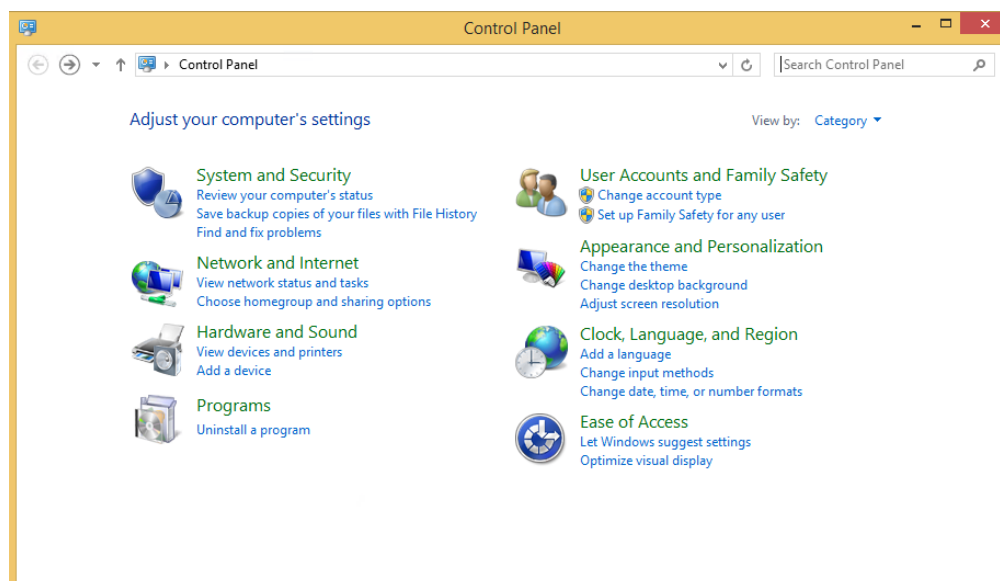
You must also be aware that the Validator runs only a subset of the complete set of tests you must run to validate whether a document is conformant with the clinical document specifications.

## 2.2 Uninstall an earlier version of the Validator

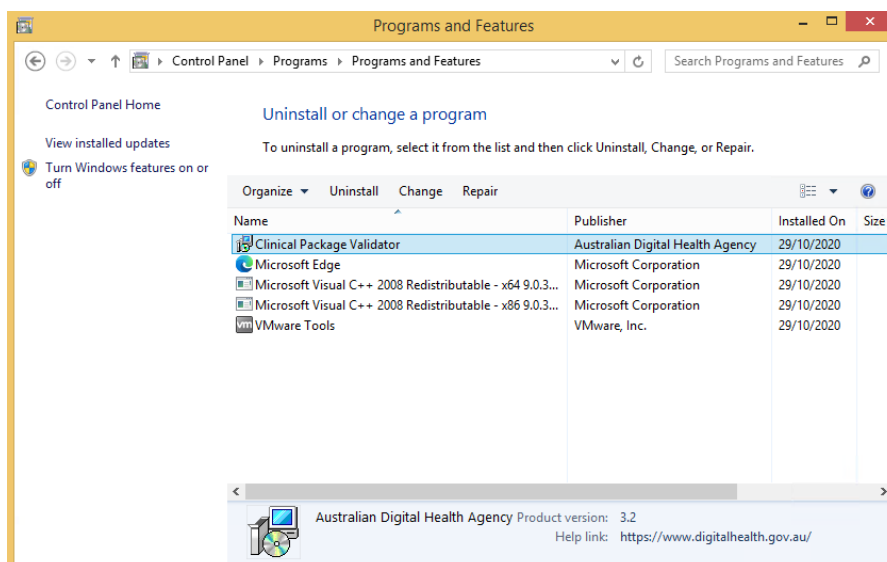
The Validator allows more than one version of the software to operate on the same computer, so there is no need to uninstall earlier versions of the Validator.

Follow the steps below if an earlier version of the Validator is already installed and you want to remove it, otherwise go to Section 2.3.

1. If an earlier version of the Validator is already installed, select Uninstall a program from the Windows Control Panel.

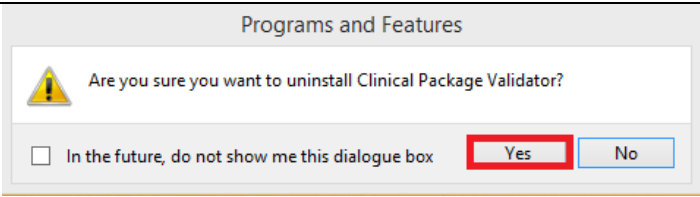


2. Select the version of the Validator to be uninstalled and then select Uninstall.



**Note:** The Uninstall option may be selected from the menu or found by right clicking on the mouse button.

3. If the following security screen appears, select Yes to allow the Uninstall process to proceed.



---

4. The uninstall process will continue to completion.

---

End

---

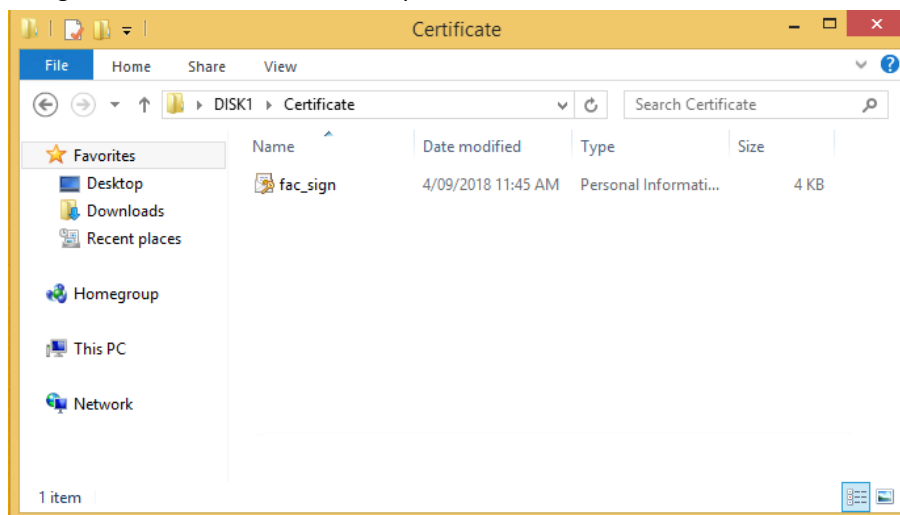


## 2.3 Install a NASH test certificate

As an alternative to importing template packages from the Agency website, the Validator allows a user to import template packages from the My Health Record software vendor test environment, provided a valid NASH organisation test certificate has already been installed.<sup>1</sup>

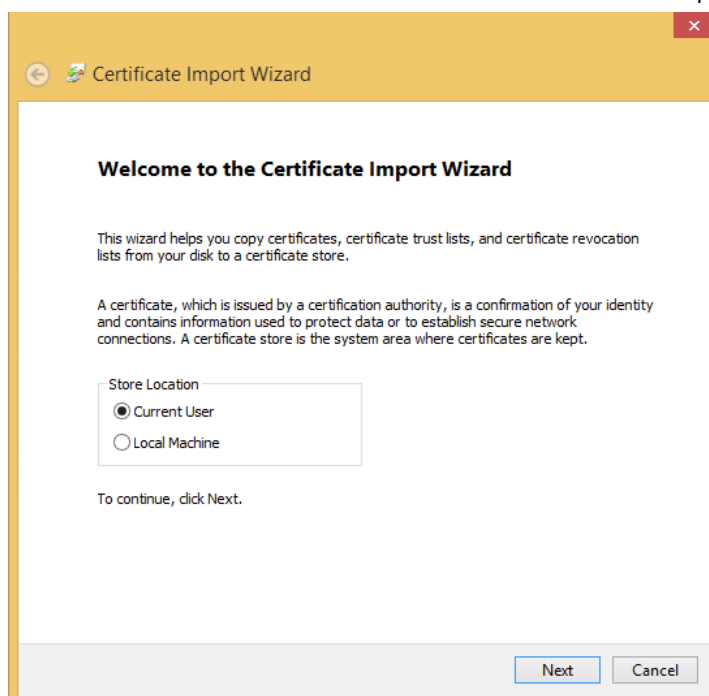
Follow the steps below to install a NASH organisation test certificate, otherwise go to Section 3.

- 1 Navigate to the folder that contains your NASH test certificates.



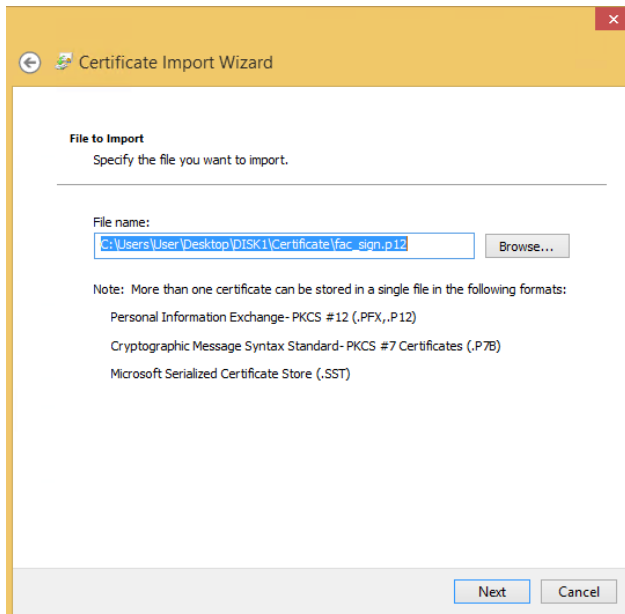
**Note:** If you do not have any NASH organisation test certificates, contact the Department of Human Services Online Technical Support helpdesk: [otsliaison@humanservices.gov.au](mailto:otsliaison@humanservices.gov.au).

- 2 Double-click the relevant certificate to launch the Certificate Import Wizard and select **Next**.



<sup>1</sup> The Validator can apply any template package. A template package is something that meets the requirements in the PCEHR Template Service - Template Package Technical Specification v1.0, available from: <https://www.digitalhealth.gov.au/implementation-resources/national-infrastructure/EP-1514-2012/NEHTA-1042-2012>

3 Select **Next**.



The screenshot shows the 'Certificate Import Wizard' window. The title bar is yellow with a red close button. The window has a yellow header bar with a back arrow and the text 'Certificate Import Wizard'. The main area is white and contains the following text:

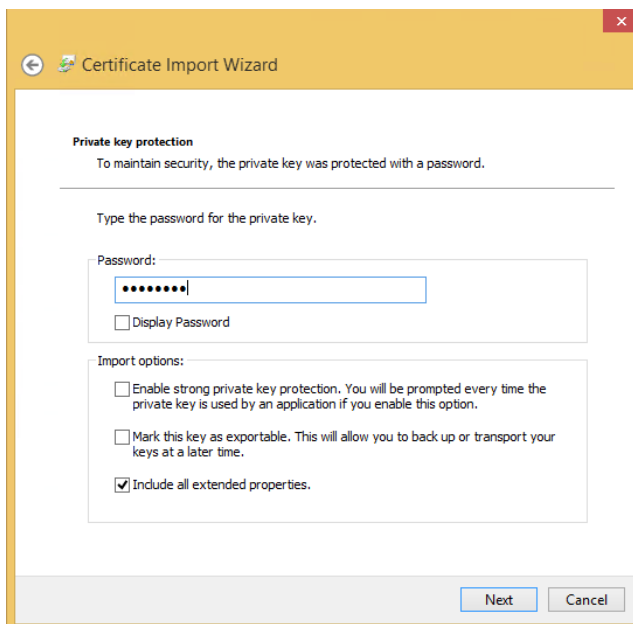
**File to Import**  
Specify the file you want to import.

File name:

Note: More than one certificate can be stored in a single file in the following formats:  
 Personal Information Exchange- PKCS #12 (.PFX,.P12)  
 Cryptographic Message Syntax Standard- PKCS #7 Certificates (.P7B)  
 Microsoft Serialized Certificate Store (.SST)

At the bottom right, there are two buttons: 'Next' and 'Cancel'.

4 Enter the password and select **Next**.



The screenshot shows the 'Certificate Import Wizard' window at the 'Private key protection' step. The title bar is yellow with a red close button. The window has a yellow header bar with a back arrow and the text 'Certificate Import Wizard'. The main area is white and contains the following text:

**Private key protection**  
To maintain security, the private key was protected with a password.

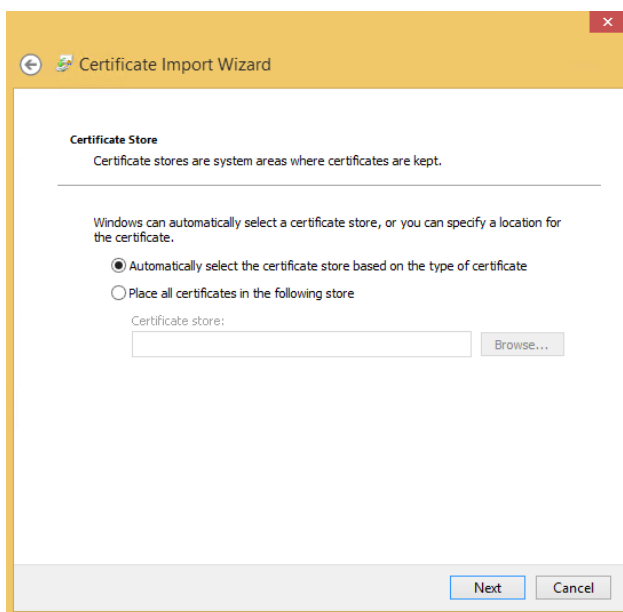
Type the password for the private key.

Password:  
 ☐

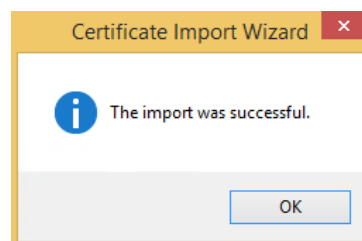
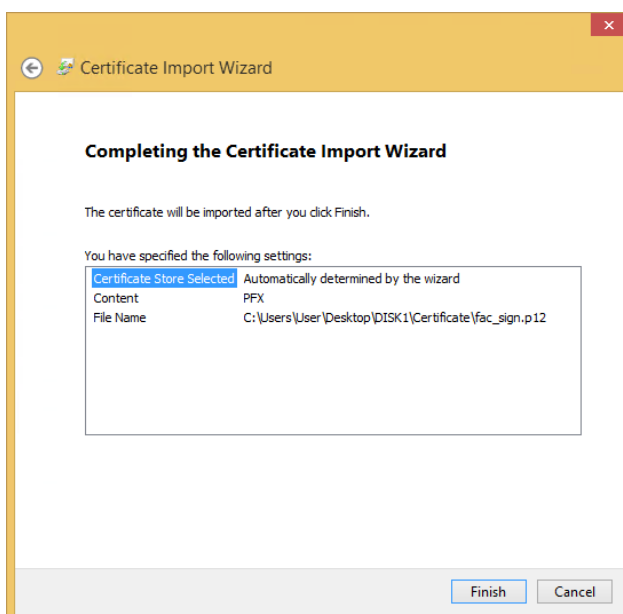
Import options:  
☐ Enable strong private key protection. You will be prompted every time the private key is used by an application if you enable this option.  
☐ Mark this key as exportable. This will allow you to back up or transport your keys at a later time.  
☒ Include all extended properties.

At the bottom right, there are two buttons: 'Next' and 'Cancel'.

5 Select **Next**.



6 Select **Finish**.



**Note:** If you are running the Validator you will need to restart it so it can detect the newly installed NASH test certificate.

- 7 If this is the first NASH certificate you have installed, you may need to also import the NASH Root and Organisation Certificates to complete the “trust chain” of the NASH Certificate which allows the computer to trust the NASH certificate.

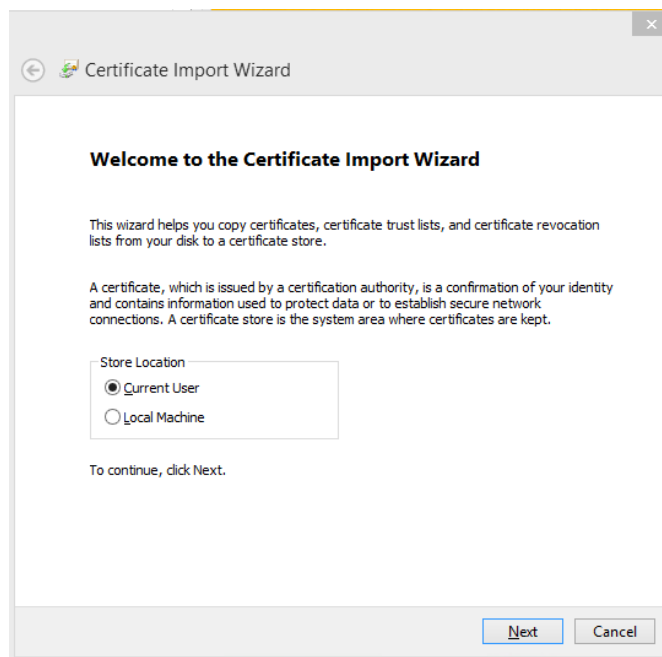
These should have been provided when you received your NASH Certificate:



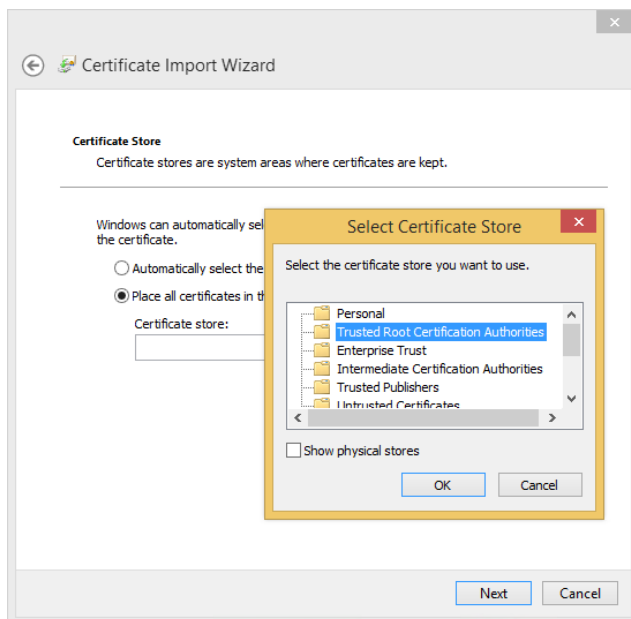
If you cannot locate them, request them from [devsupport@servicesaustralia.gov.au](mailto:devsupport@servicesaustralia.gov.au).

- 8 To install the Root (tmarca.crt) and Organisation (tmaoca.crt) Certificates, Double click on the Root file, and select **Install Certificate ...**

Then select **Next**.

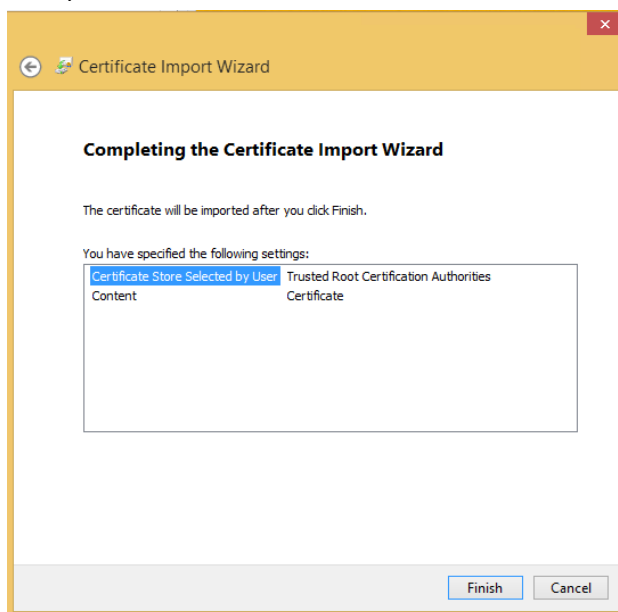


- 9 Choose **Place all certificates in the following store** and then select **Browse ...** and choose the **Trusted Root Certification Authorities** Folder

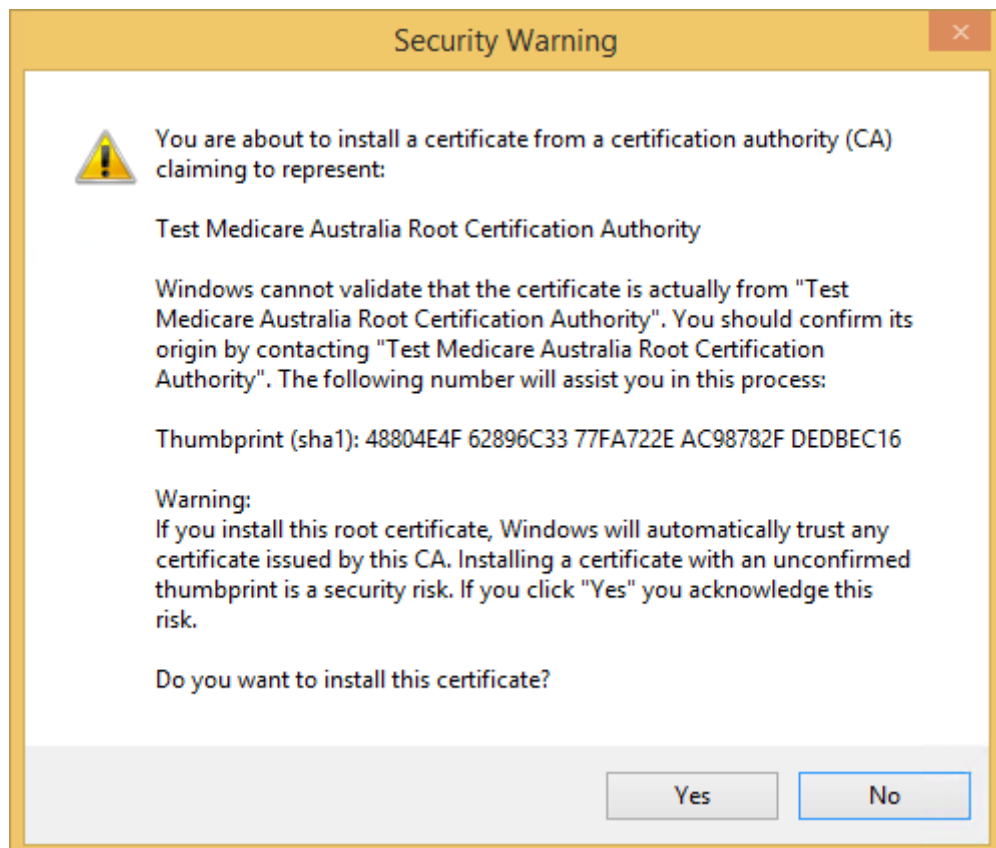


Now select **Next**.

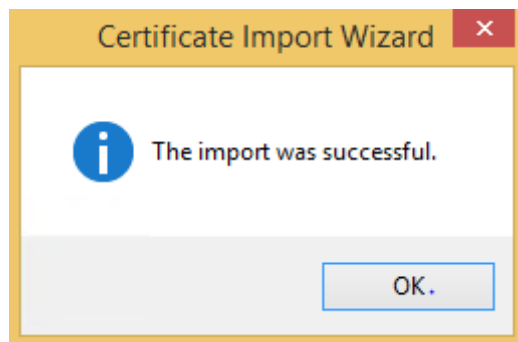
- 10 Finally select **Finish**



- 11 If a Security Warning appears, select **Yes**



- 12 The Certificate Wizard will then confirm the import was successful.  
Repeat the exercise from 8-11 with the Organisation certificate.



End

## 3 Installing the Validator and prerequisite software

### 3.1 Installing the Validator

This procedure requires that Microsoft .NET Framework 4.7.2 (or a later version) is installed. The installer will detect if .NET Framework 4.7.2 is not installed and prompt the user to install.

If this fail, the **ndp472-kb4054530-x86-x64-allos-enu.exe** can be run to install it.

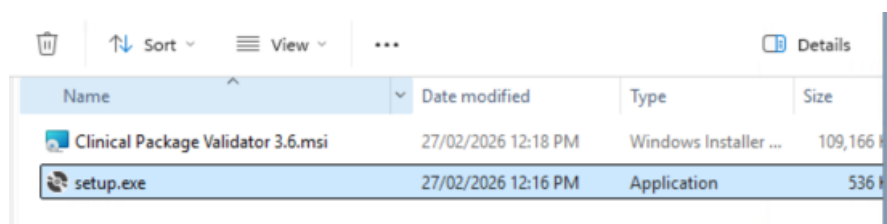
To install the Validator, follow the steps below.

- 1 Locate the installer file (**Clinical Package Validator x.y.exe**, with “x.y” indicating the Validator’s version number) and the **setup.exe** and copy/checkout the files to your local computer..

**Note:**

- The Validator installation may not work from a network drive.
- The two installer files must be co-located.

- 2 Open Windows Explorer and navigate to the installer folder. Double-click the **setup.exe** file to install the software.

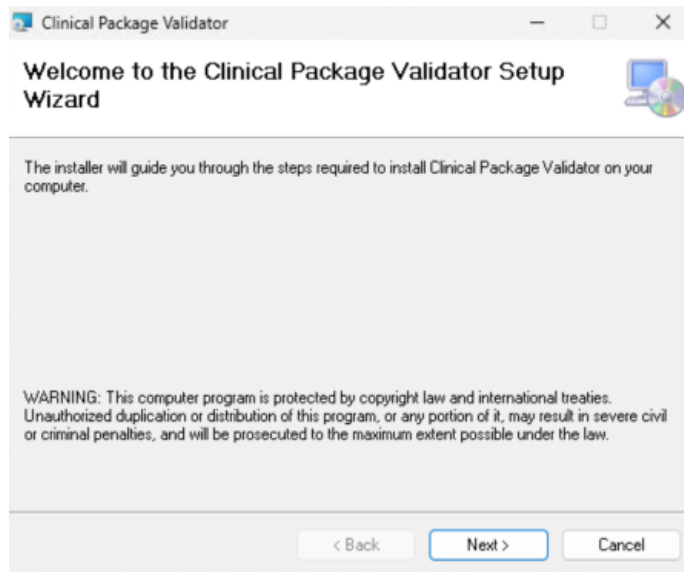


- 3 **Note:** Windows may mark files downloaded from the Internet as “Blocked”. This prevents the Validator from running.

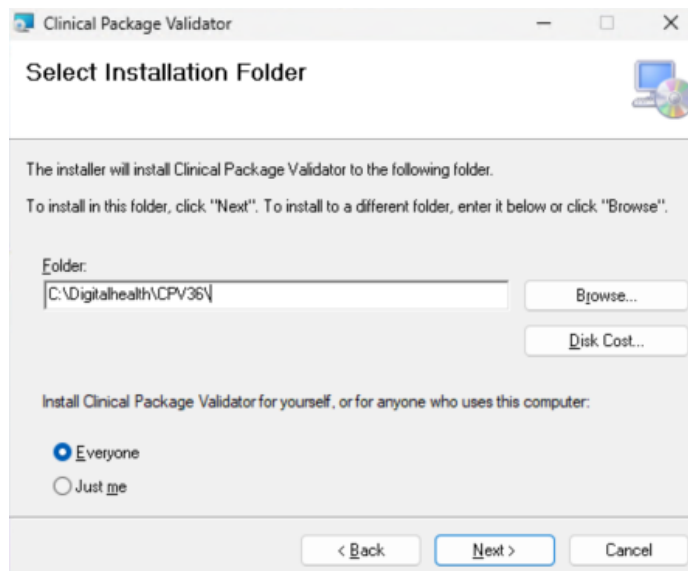
To unblock a file, right-click on it and select **Properties**, then select **Unblock** in the ‘General’ tab, followed by **OK**.

- 4 Once the file is unblocked, continue installing the Validator by once again double-clicking the installer file.

- 5 When the InstallShield Wizard opens, select **Next**.

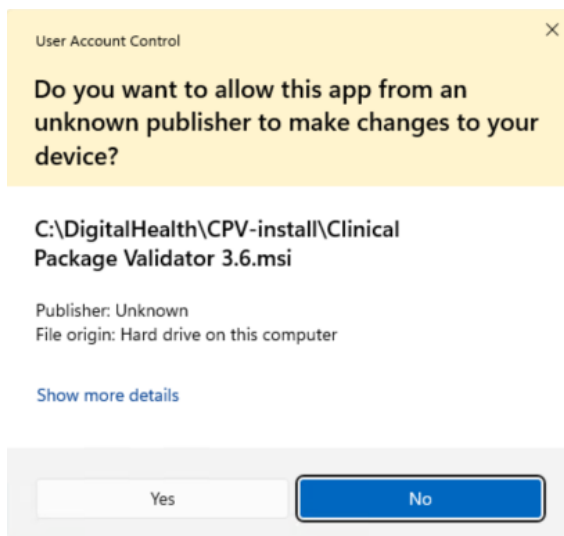


- 6 Select **Next>Next>** and the application will start installing. Do not change the install folder

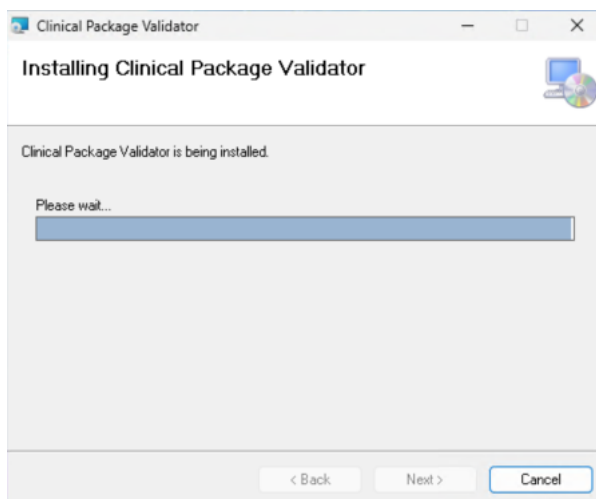




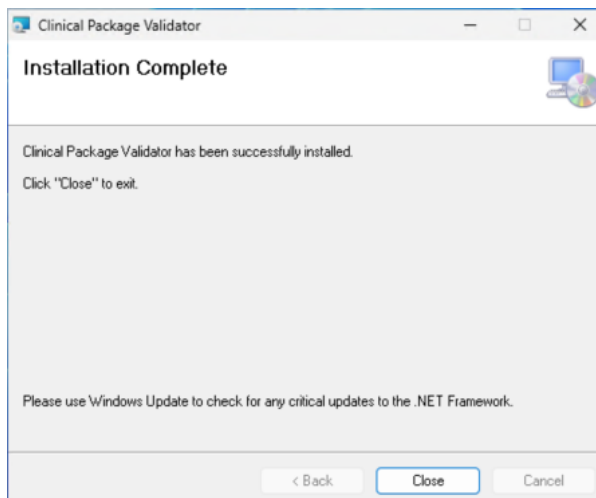
- 7 If the following security screen appears, select **Yes** to allow the installation to proceed.



- 12 The Validator will start installing.



- 13 Once the Validator installation is complete, select **Close**.

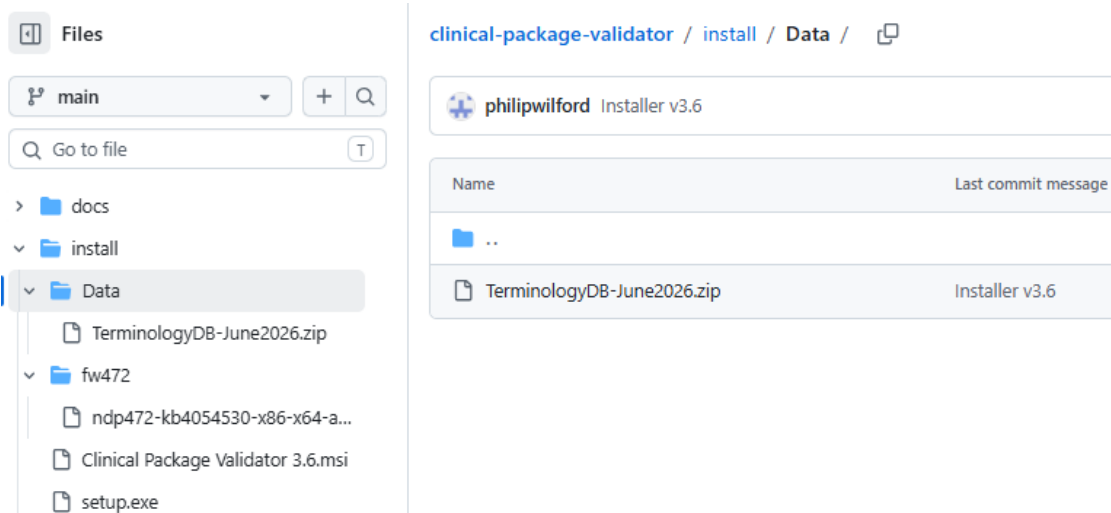


The Validator is now installed.

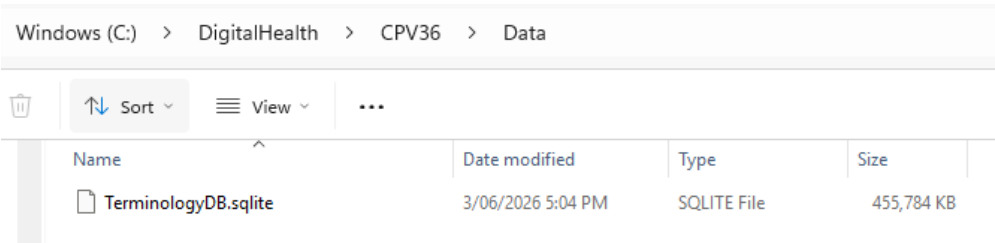
- 14 To keep the installation file small, the database file **TerminologyDB.sqlite** (roughly 110MB) in the C:\DigitalHealth\CPV36\Data folder will not include the latest SNOMED dataset.

Replace this file with the contents of the ZIP file (using the latest version uploaded) TerminologyDB-MonthYear.zip from the subfolder **Data** on GITHUB.

Alternatively, download the latest versions of SNOMED and install following Section 3.2 of the User and Configuration Guide.



Replace this file:



Name	Date modified	Type	Size
TerminologyDB.sqlite	3/06/2026 5:04 PM	SQLITE File	455,784 KB

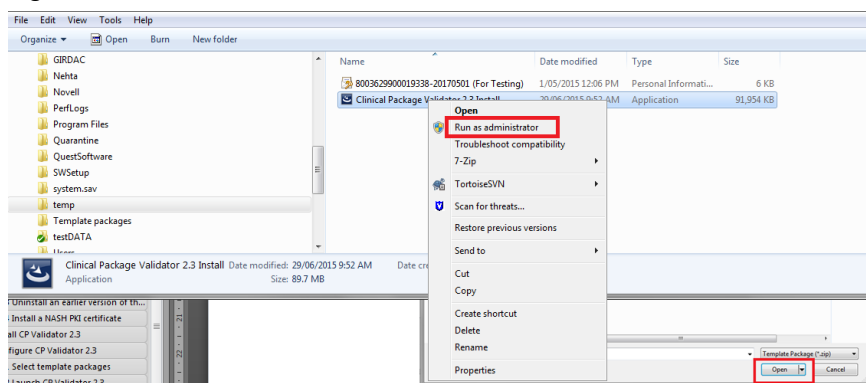
En  
d

## 4 Troubleshooting

### 4.1 Install the Validator in Administrator mode

The Validator may display unexpected behaviour if its installation was unsuccessful. If this happens, follow the steps below.

- 1 Uninstall any previous versions of the Validator (Section 2.2).
- 2 Delete the C:\DigitalHealth\CPVxx directory.
- 3 Ensure the **Installer** file is on the desktop or a local drive (e.g. C:\).
- 4 Right-click the **Installer** file and select **Run as administrator**.



- 5 Enter the admin password if requested.
- 6 Complete the installation of the Validator (Section 3).

End

## Acronyms

Acronym	Description
AMT	Australian Medicines Terminology
CDA	Clinical Document Architecture. CDA is a trademark of Health Level Seven International and is registered with the United States Patent and Trademark Office
CSS	Cascading Style Sheets
DVA	Department of Veterans' Affairs
IHTSDO	International Health Terminology Standards Development Organisation
NASH	National Authentication Service for Health
PBS	Pharmaceutical Benefits Scheme
SNOMED CT	Systematized Nomenclature of Medicine Clinical Terms
SNOMED CT-AU	Systematized Nomenclature of Medicine Clinical Terms – Australia
SVT	Software Vendor Test environment
XML	Extensible Mark-up Language